

FlexiPrep

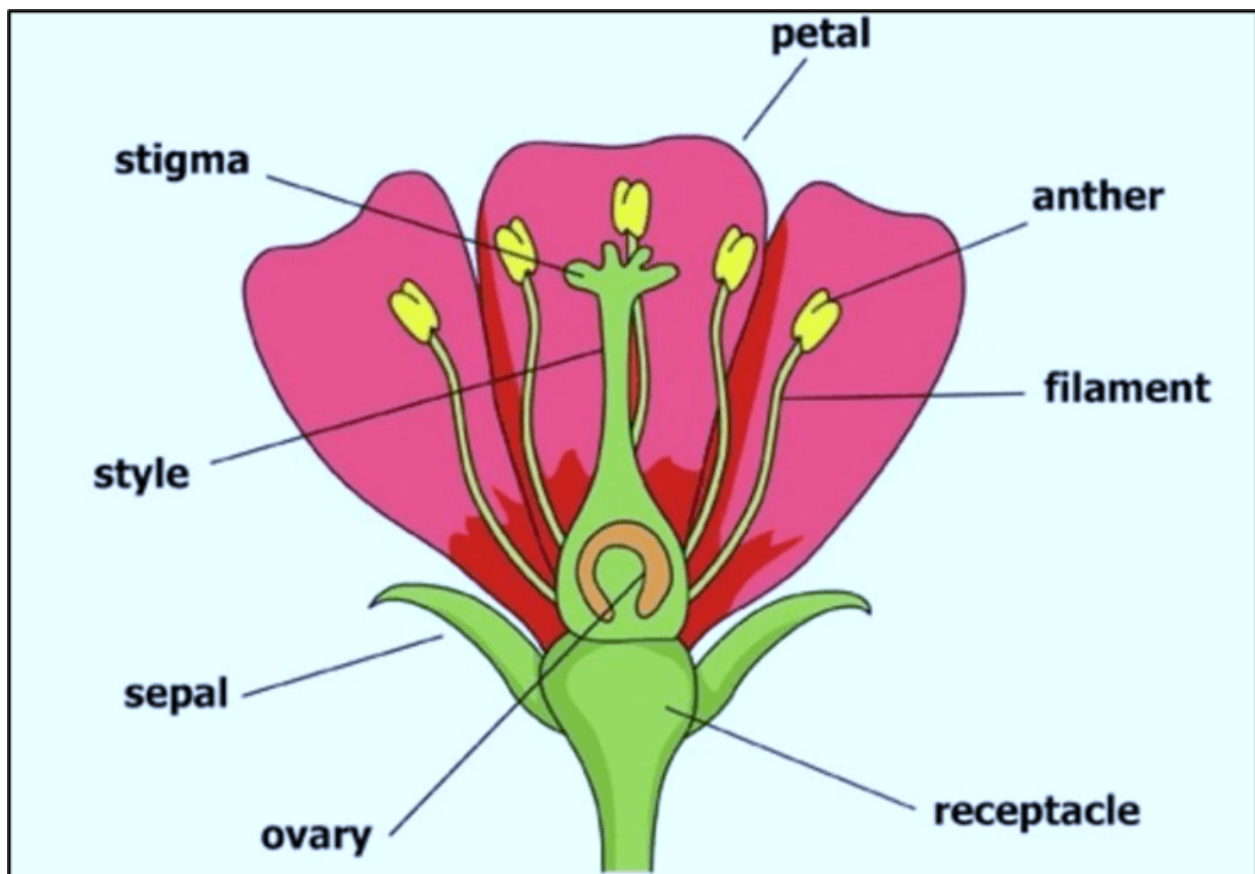
Class 6 Science Chapter 7 Getting to Know Plants, Flowers, Functions of Flowers, Whorls (For CBSE, ICSE, IAS, NET, NRA 2022)

Get unlimited access to the best preparation resource for CBSE/Class-6 : [get questions, notes, tests, video lectures and more](#)- for all subjects of CBSE/Class-6.

Getting to Know Plants

Flowers

- It is the reproductive part of the plant.
- It is also beautiful and colourful part of a flowering plant.



©FlexiPrep. Report ©violations @<https://tips.fbi.gov/>

Stigma

- It is the sticky end at the top of the style.
- It is vital for the process of reproduction in flowering plants.

Style

- It is the tubelike structure through which stigma is attached.
- It provides pathway to the pollen grains.
- It supports the stigma and connects it to the ovary.

Sepal

- It is the outer green leafy structure in a flower.
- It protects the flower at bud stage.

Ovary

- It is the lower broader portion of the pistil.
- It consists of ovules which take part in reproduction.

Receptacle

- An area where a flower binds itself to the stalk.
- It often becomes part of the fruit after the fertilization process.

Filament

- One of the male reproductive parts of the plant.
- It attaches the anther to the stem of the flower and also supports it.

Anther

- The part of the stamen where pollen is produced.
- It contains microsporangia.

Pistil

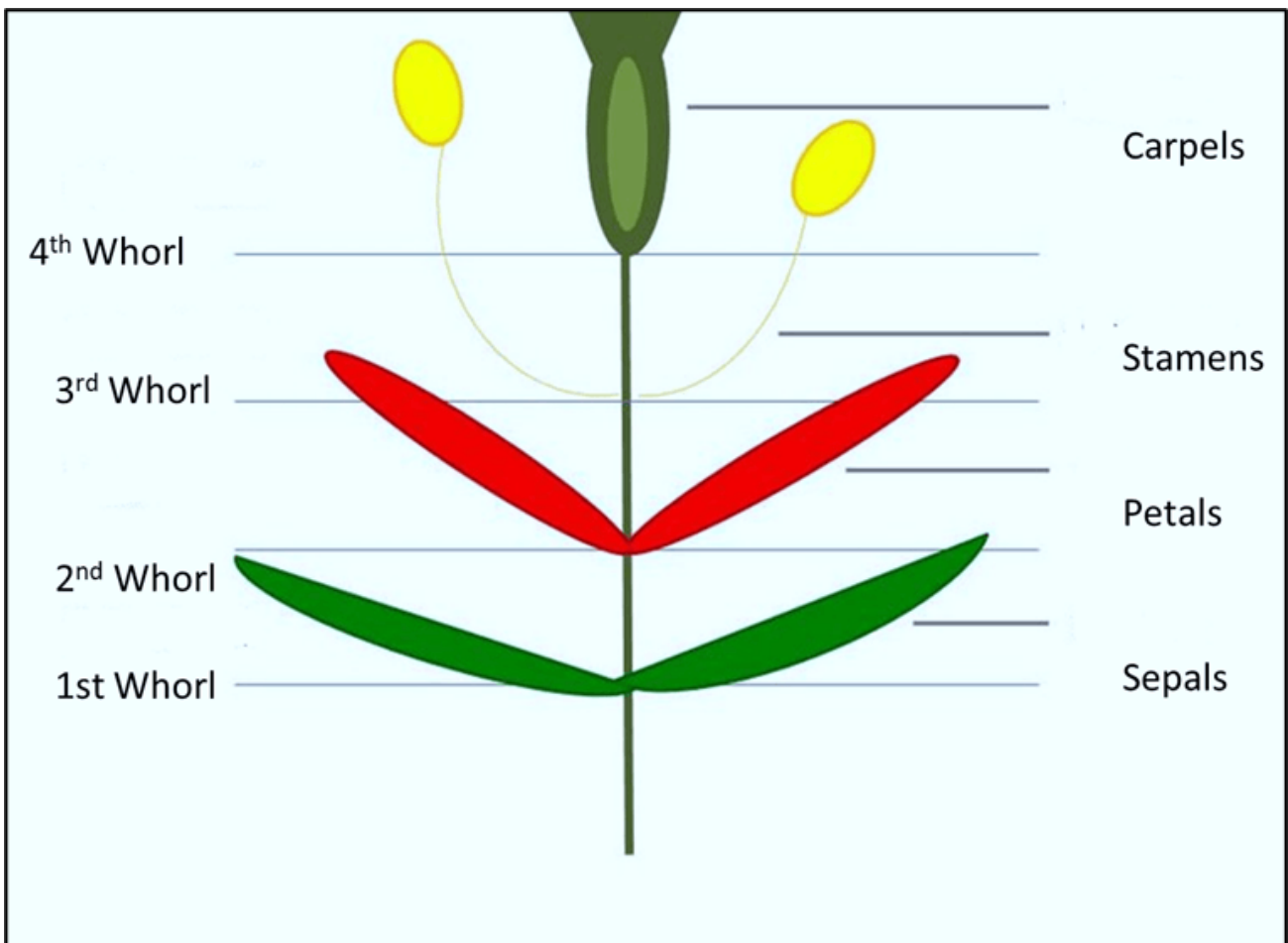
The ovule producing part of a flower.

Functions of Flower

- Provides nectar to certain birds and insects.
- The ovary of the flower develops into a fruit after fertilization process.
- Reproduction is the most important function of flowers.
- Diaspores can be produced from flowers without fertilization.

Whorls

- The four whorls are responsible for the radial arrangement of a flower.
- Calyx, Corolla, Stamens and Carpels are the four whorls.



©FlexiPrep. Report ©violations @<https://tips.fbi.gov/>

Calyx

It is the outermost whorl of a flower consisting of sepals, tiny leaves present at the base of the flower.

Corolla

It contains petals to attract pollinators and protect the reproductive parts of a flower.

Stamens

- It is the male reproductive part consisting of a filament with a thread-like structure.
- Anther produces pollen which contributes to the male reproductive process of the plant.

Carpels

- It contains the pistil which is the female reproductive part of the flower.

- It consists of the ovary, style, and stigma.

Developed by: [Mindsprite Solutions](#)