

FlexiPrep**NCERT Class VI Science Solutions: Chapter 7-Getting to Know Plants Part 2 (For CBSE, ICSE, IAS, NET, NRA 2022)**

Doorsteptutor material for CBSE/Class-6 is prepared by world's top subject experts: [get questions, notes, tests, video lectures and more](#)- for all subjects of CBSE/Class-6.

Question 8:

Is it possible for you to recognize the leaves without seeing them? How?

Answer:

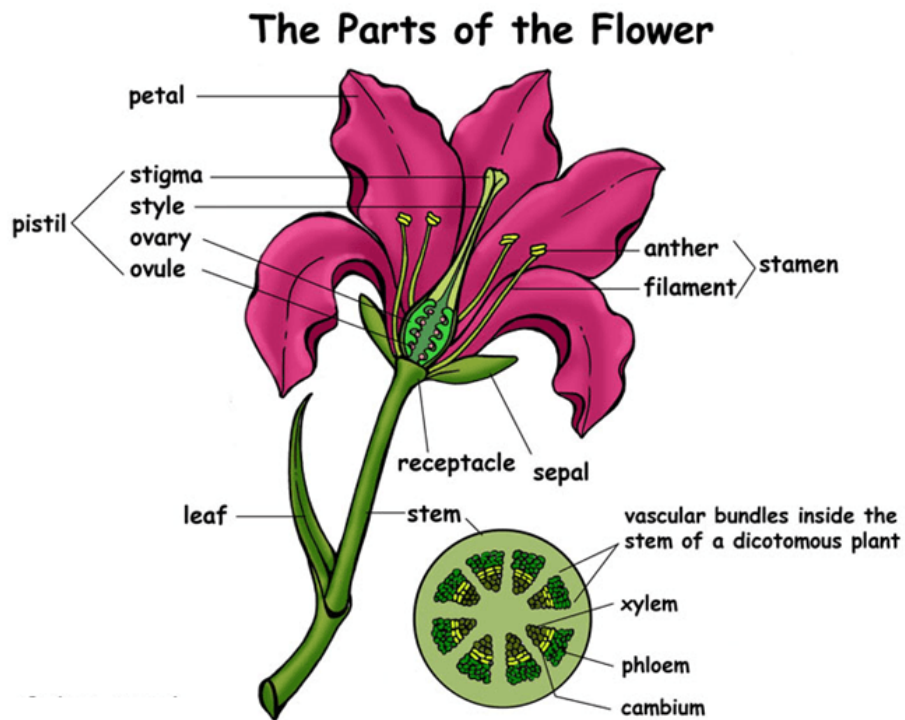
Yes. We can identify the type of leaves by looking at its roots. Plants having leaves with reticulate venation have tap roots while plants having leaves with parallel venation have fibrous roots.

Question 9:

Write the names of the parts of a flower.

Answer:

The parts of a flower are sepals, petals, stamens and pistil.



©FlexiPrep. Report @violations @<https://tips.fbi.gov/>

Question 10:

Which of the following plants have you seen? Of those that you have seen, which one have flowers?

Grass, maize, wheat, chili, tomato, tulsi, pipal, shisham, banyan, mango, jamun, guava, pomegranate, papaya, banana, lemon, sugarcane, potato, groundnut

Answer:

We have seen the following plants:

- Grass, maize, wheat, chilli, tomato, tulsi, pipal, banyan, mango, jamun, guava, papaya, banana, lemon, sugarcane, potato.

Plants having flowers:

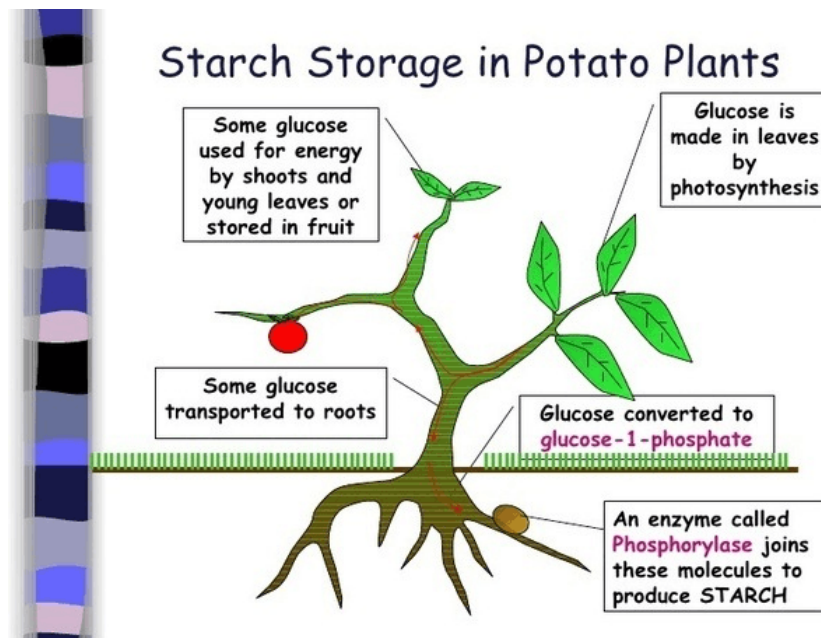
- Maize, wheat, chilli, tomato, tulsi, pipal, shisham, banyan, mango, jamun, guava, pomegranate, papaya, banana, lemon, potato.

Question 11:

Name the part of the plant which produces its food. Name this process.

Answer:

Leaves produce food for plant with the process of photosynthesis.



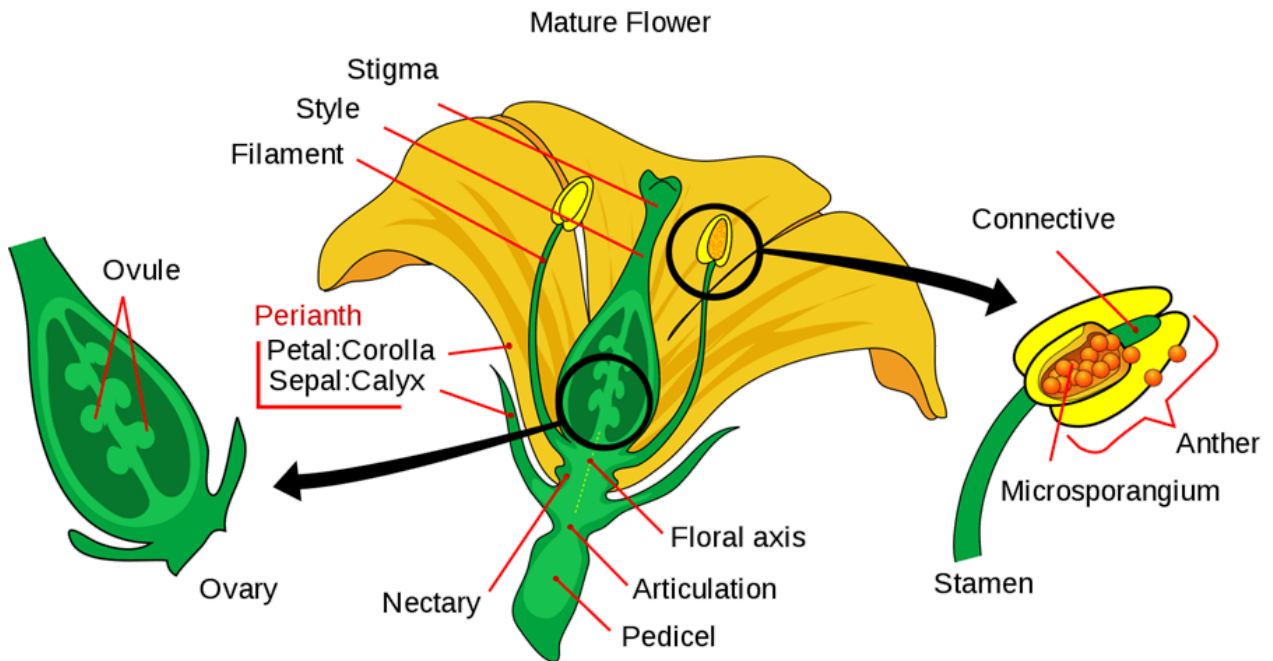
©FlexiPrep. Report @violations @<https://tips.fbi.gov/>

Question 12:

In which part of a flower, you are likely to find the ovary?

Answer:

Ovary is located in the lowermost and swollen part of the pistil of flower.



©FlexiPrep. Report @violations @<https://tips.fbi.gov/>

Question 13:

Name two flowers, each with joined and separated sepals.

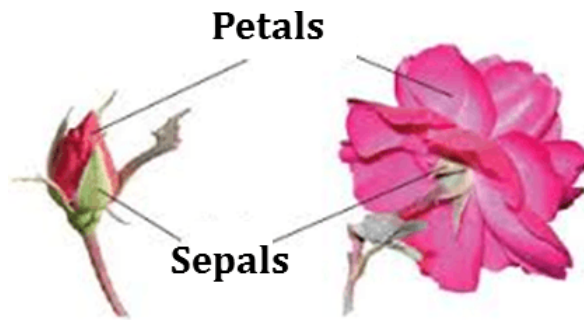
Answer:

Plants with joined sepals: Datura and Tomato flower.



©FlexiPrep. Report @violations @<https://tips.fbi.gov/>

Plants with separated sepals: Lotus and Rose.



©FlexiPrep. Report @violations @<https://tips.fbi.gov/>

Developed by: [Mindsprite Solutions](#)