

[FlexiPrep: Downloaded from flexiprep.com \[https://www.flexiprep.com/\]](https://www.flexiprep.com/)

For solved question bank visit [doorsteptutor.com \[https://www.doorsteptutor.com\]](https://www.doorsteptutor.com) and for free video lectures visit [Examrace YouTube Channel \[https://youtube.com/c/Examrace/\]](https://youtube.com/c/Examrace/)

NCERT Class X Science Class: Chapter – 7. Control and Coordination – Part-1

Get top class preparation for CBSE/Class-10 right from your home: [get questions, notes, tests, video lectures and more \[https://www.doorsteptutor.com/Exams/CBSE/Class-10/\]](https://www.doorsteptutor.com/Exams/CBSE/Class-10/) - for all subjects of CBSE/Class-10.

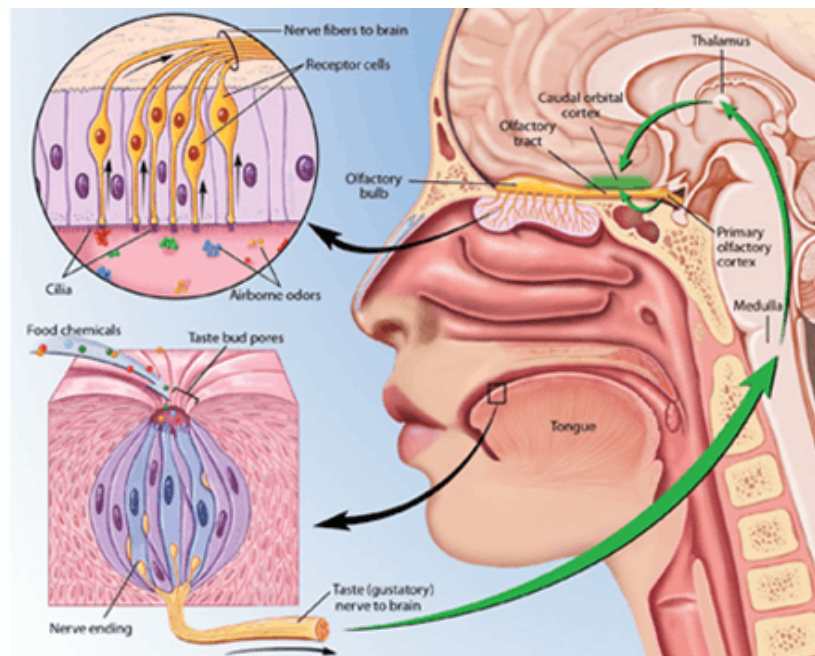
Multiple Choice Questions

Question 1:

Which of the following statements is correct about receptors?

- (a) Gustatory receptors detect taste while olfactory receptors detect smell
- (b) Both gustatory and olfactory receptors detect smell
- (c) Auditory receptors detect smell and olfactory receptors detect taste
- (d) Olfactory receptors detect taste and gustatory receptors smell

Answer: A

**Question 2:**

Electrical impulse travels in a neuron from

- (a) Dendrite → axon → axonal end → cell body
- (b) Cell body → dendrite → axon → axonal end
- (c) Dendrite → cell body → axon → axonal end
- (d) Axonal end → axon → cell body → dendrite

Answer: C

Question 3:

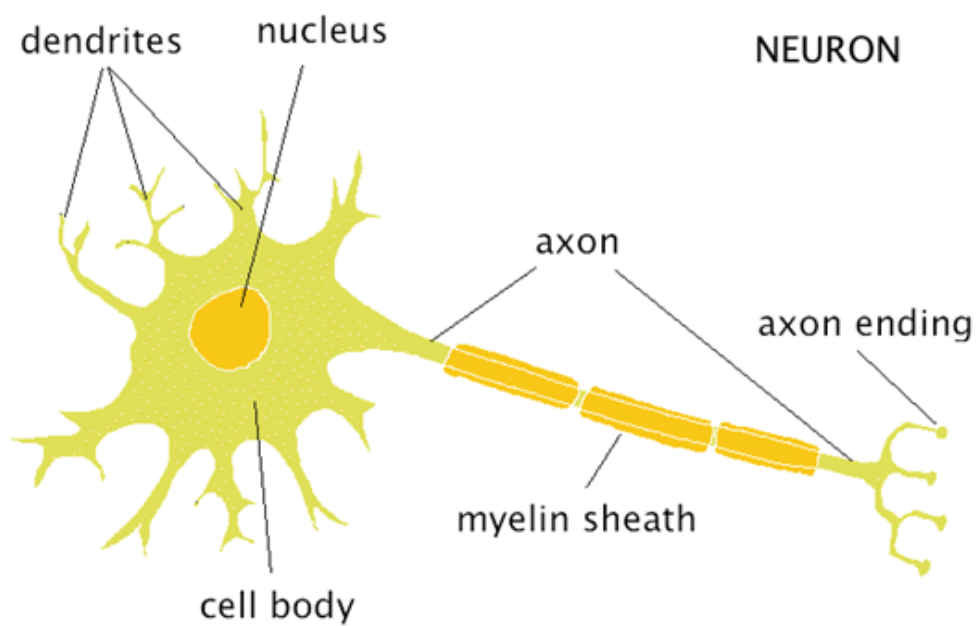
In a synapse, chemical signal is transmitted from

- (a) Dendritic end of one neuron to axonal end of another neuron
- (b) Axon to cell body of the same neuron

(c) Cell body to axonal end of the same neuron

(d) Axonal end of one neuron to dendritic end of another neuron

Answer: D



Question 4:

In a neuron, conversion of electrical signal to a chemical signal occurs at/in

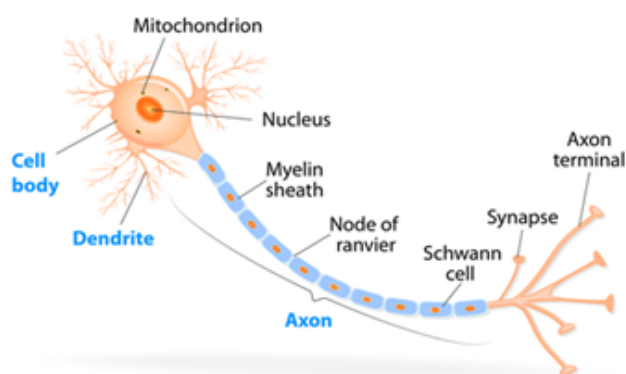
(a) Cell body

(b) Axonal end

(c) Dendritic end

(d) Axon

Answer: B



Question 5:

Which is the correct sequence of the components of a reflex arc?

- (a) Receptors → Muscles → Sensory neuron → Motor neuron → Spinal cord
- (b) Receptors → Motor neuron → Spinal cord → Sensory neuron → Muscle
- (c) Receptors → Spinal cord → Sensory neuron → Motor neuron → Muscle
- (d) Receptors → Sensory neuron → Spinal cord → Motor neuron → Muscle

Answer: D



Question 6:

Which of the following statements are true?

- (i) Sudden action in response to something in the environment is called reflex action
 - (ii) Sensory neurons carry signals from spinal cord to muscles
 - (iii) Motor neurons carry signals from receptors to spinal cord
 - (iv) The path through which signals are transmitted from a receptor to a muscle or a gland is called reflex arc
- (a) (i) and (ii)
 - (b) (i) and (iii)
 - (c) (i) and (iv)
 - (d) (i) , (ii) and (iii)

Answer: C