

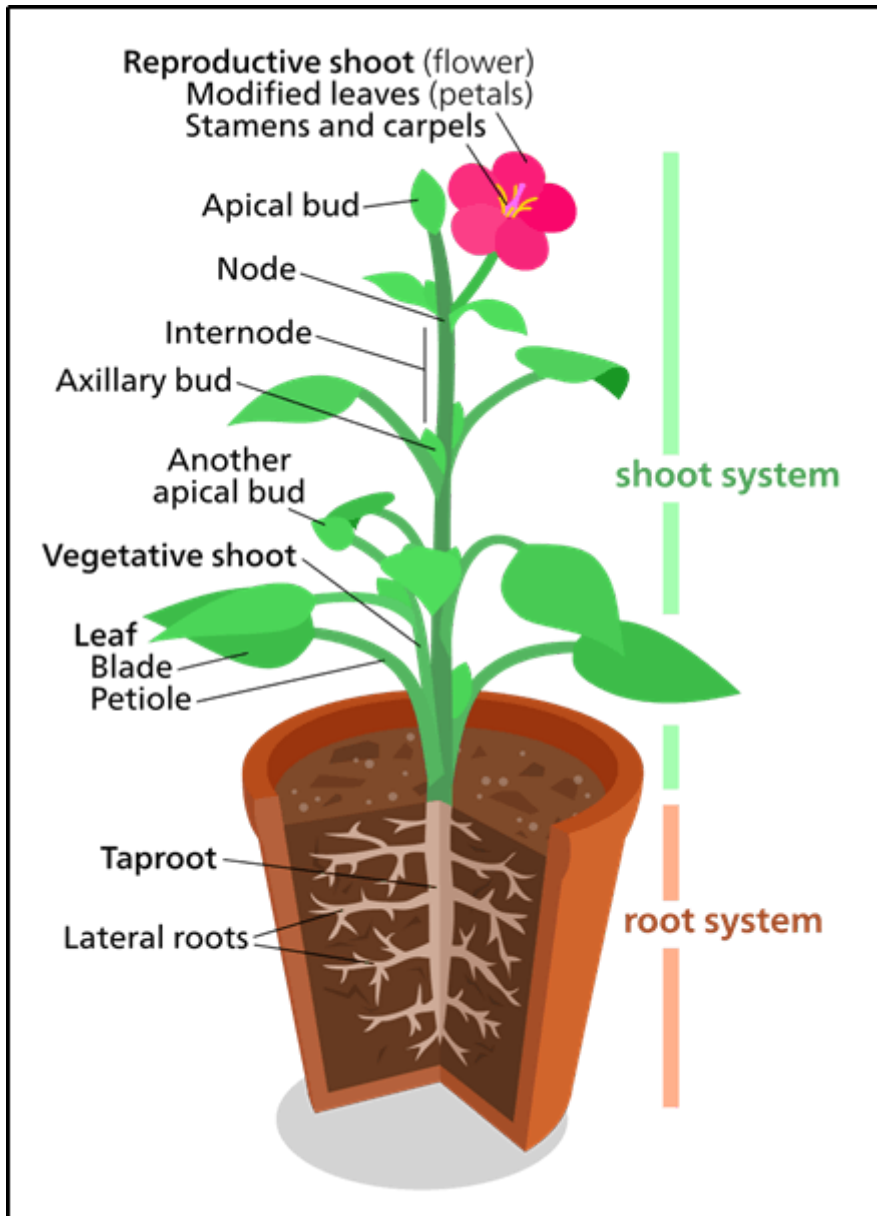
FlexiPrep

Botany: Definition and Meaning of Botany, Branches of Botany (For CBSE, ICSE, IAS, NET, NRA 2022)

Glide to success with Doorsteptutor material for competitive exams : [get questions, notes, tests, video lectures and more](#)- for all subjects of your exam.

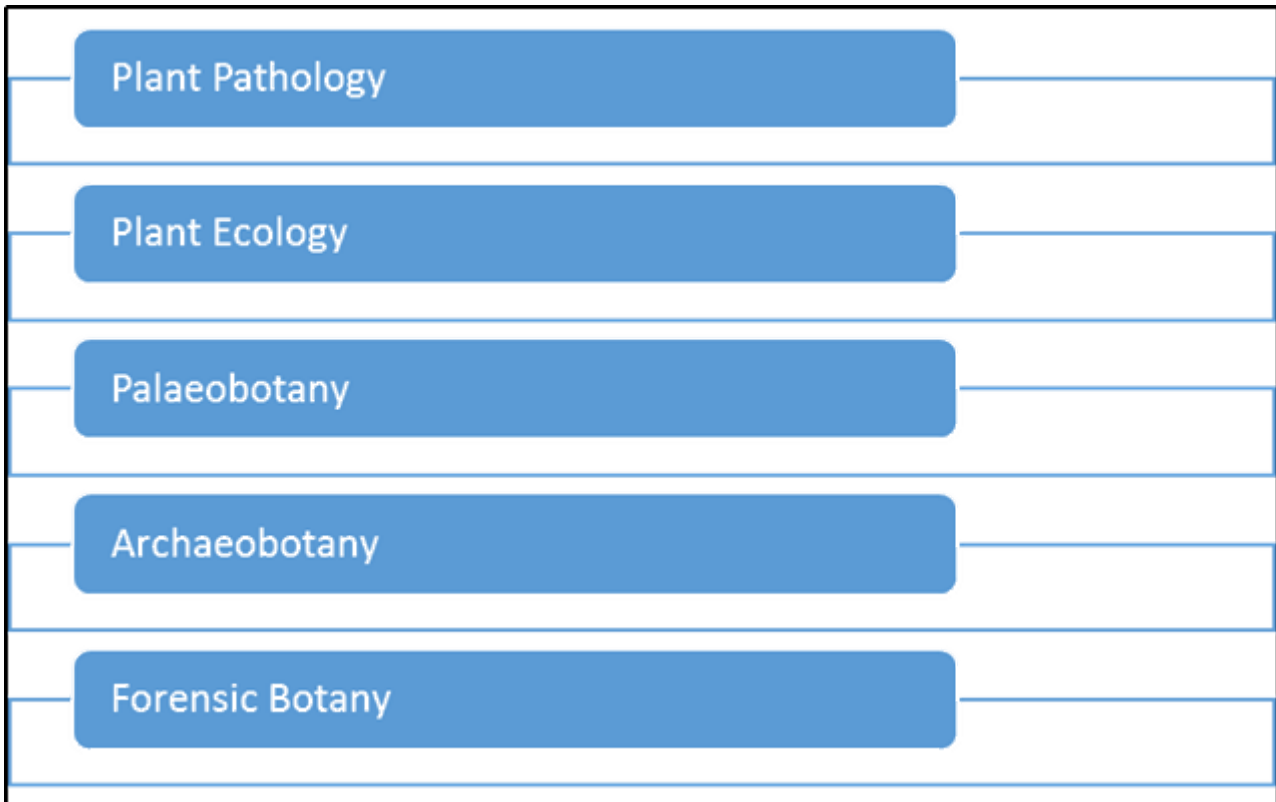
Definition and Meaning of Botany

- The branch of biology that deals with the study of plants.
- The term 'botany' is derived from the Greek word 'botane.'
- Botany initially included all the plant-like organisms such as algae, lichens, ferns, fungi, mosses.
- It is also the study of the vital processes such as photosynthesis, respiration, and plant nutrition.
- Botany originated in prehistory as herbalism.



©FlexiPrep. Report ©violations @<https://tips.fbi.gov/>

Branches of Botany



©FlexiPrep. Report ©violations @<https://tips.fbi.gov/>

Plant Pathology

- A science studies plant disease.
- It attempts to improve the chances for survival of plants.
- It has advanced techniques to protect crops from losses due to diseases.

Plant Ecology

- It is a sub discipline of ecology.
- It studies the distribution and abundance of plants.
- It supplies food to all terrestrial organisms, including humans.

Palaeobotany

- It is the branch of botany dealing with the recovery and identification of plant remains.
- It focuses on plant fossils, including algae, fungi, and related organisms, as well as mosses, ferns, and seed plants.

Archaeobotany

- This tells us the way plants were used by the people in the past.
- This is important from the medicinal and spiritual significances perspective of a plant.
- Archaeobotany is also known as Paleoethnobotany.

Forensic Botany

- It is the use of plants and plant parts.
- Includes pollen, seeds, leaves, flowers, fruits, and wood.
- It plays an important role while ascertaining the cause of death.
 - Investigation of criminal cases
 - Legal questions
 - Disputes
 - Non-criminal cases

Modern Botany

Early Modern Botany

- The systems of plant identification were developed during the 18th century.
- New plants for study were arriving in Europe by the 18th century.

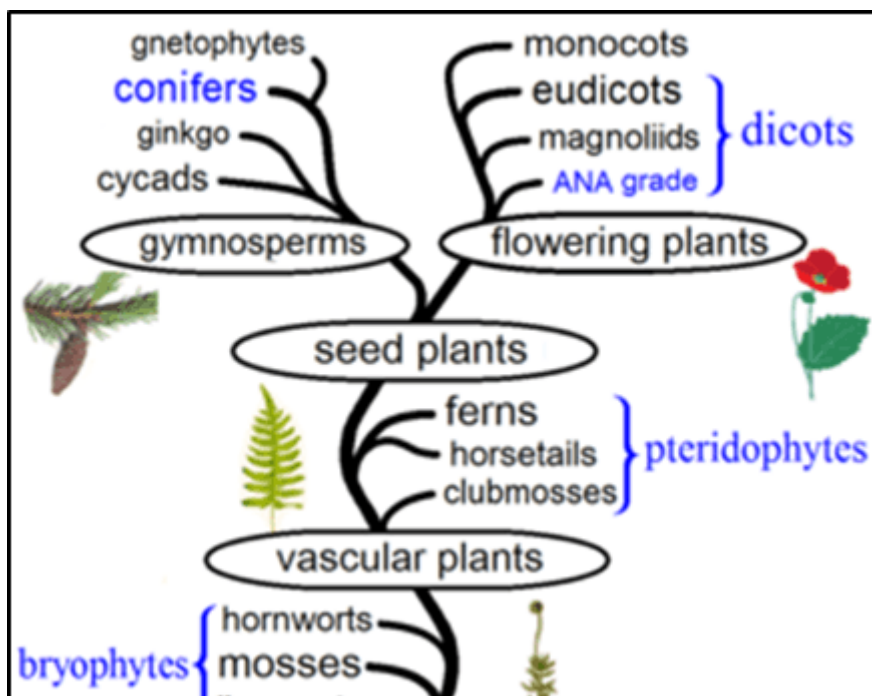
Late Modern Botany

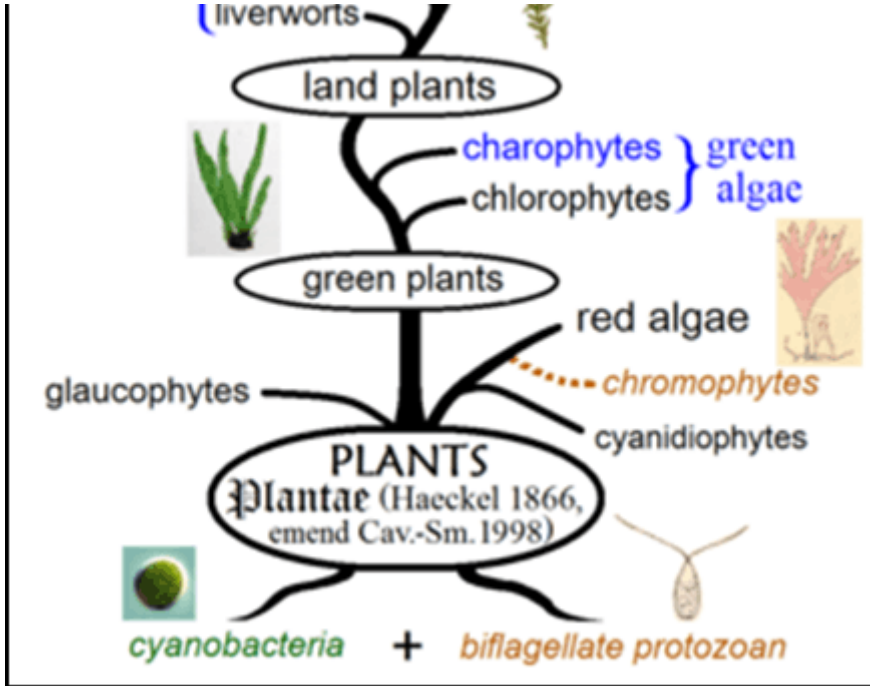
- This includes modern techniques of organic chemical analysis.
 - Spectroscopy
 - Chromatography
 - Electrophoresis
- August Weismann (1834 – 1914) proved that inheritance only takes place through gametes.

Importance of Botany

- It helps in studying the characteristics and the uses of plants.
- It plays a crucial role around economic productivity.
 - Involvement in the study of crops.
 - Helps farmers increase crop yield.
- The study of Botany also influences the fields of science, medicine, and cosmetics.
- It further helps in understanding the environmental challenges more clearly.
- It helps in producing the medicine and materials for treatment of diseases.
- It helps in understanding the fundamental life processes.

Evolution of Plants





[©FlexiPrep. Report @violations @https://tips.fbi.gov/](https://tips.fbi.gov/)

Developed by: [Mindsprite Solutions](#)