

These Slides Accompany the YouTube Video Tutorial:
<https://www.youtube.com/watch?v=naRUe1pXiRg>

Sagar Mala Project

Towards Blue Revolution

Need for Sagarmala Project



~7,500km of coastline spanning 13 maritime States and Union Territories




~20% of India's population lives in coastal areas



Contribution of Maritime States to Indian GDP:
~60% (as of 2012-13)

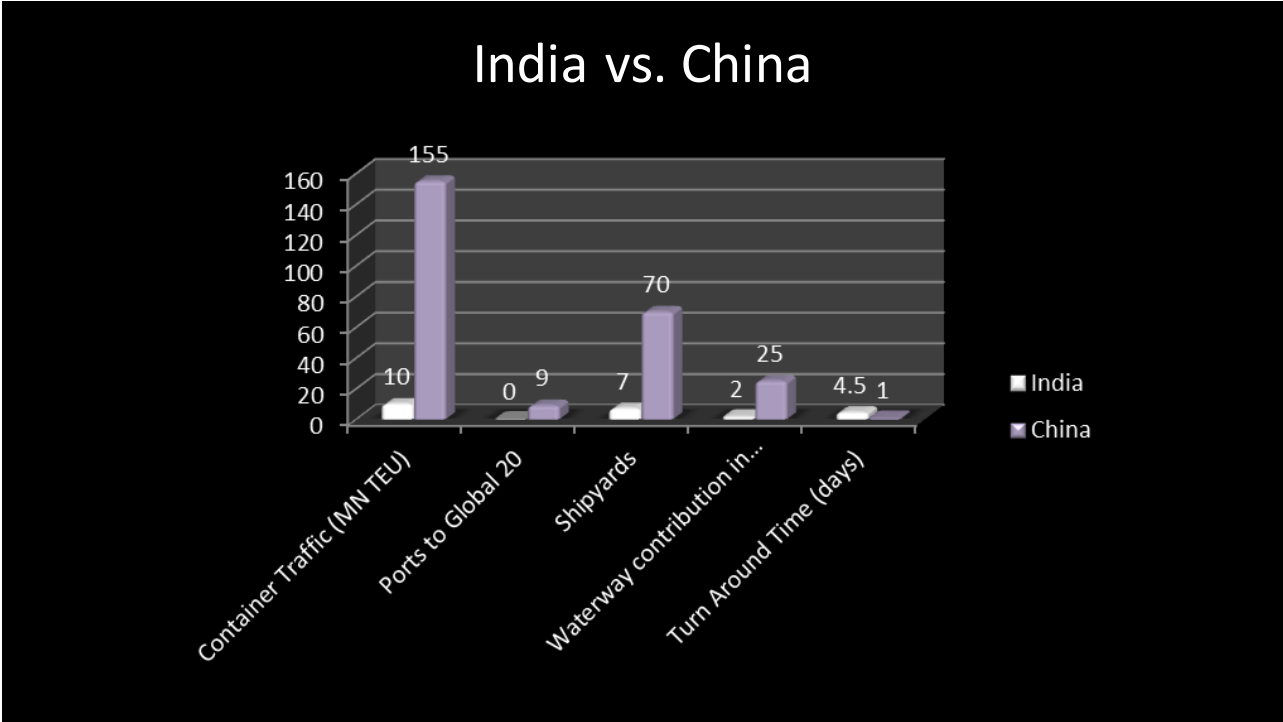
These Slides Accompany the YouTube Video Tutorial:
<https://www.youtube.com/watch?v=naRUe1pXiRg>



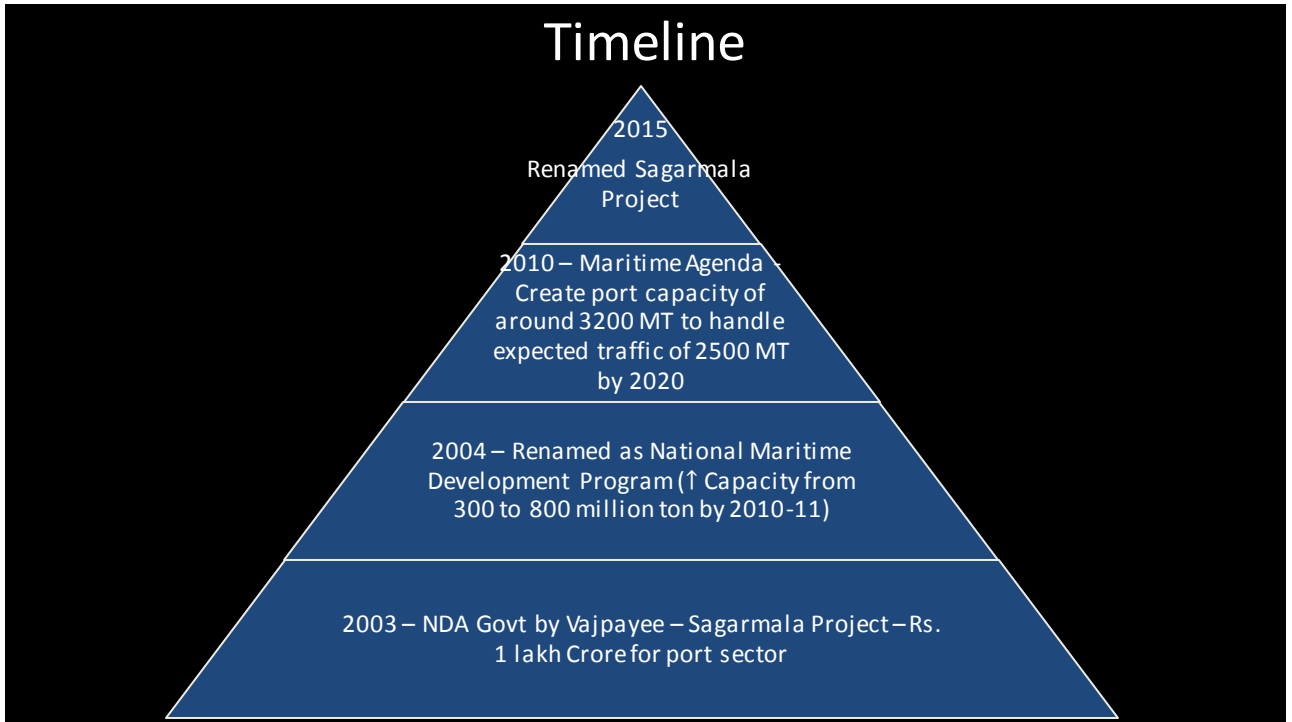
India has **12 major ports** and about 200 non-major ports

~95% of India's trade by volume and 70% by value takes place through maritime transport

Cargo traffic expected to grow from 976 MMT in 2012 to **1,758 MMT** by 2017



These Slides Accompany the YouTube Video Tutorial:
<https://www.youtube.com/watch?v=naRUe1pXiRg>



3 Pillars of Project

➤ Port Led Development

- Undertake development of Coastal economic zones with projects like- port based industrialization, coastal tourism, Logistics parks, warehousing, fisheries etc.

➤ Port Infrastructure Enhancement

- Action points on transforming existing ports into world class ports by developing deep drafts, mechanization of existing berths, creation of new capacity & greenfield ports

➤ Efficient Evacuation

- Expansion of rail / road network / inland waterways connected to ports & identification of congested routes
- Find optimized transport solution for bulk and container cargo

These Slides Accompany the YouTube Video Tutorial:
<https://www.youtube.com/watch?v=naRUe1pXiRg>

Vision – India's Move

- Increase competitiveness of core industry and manufacturing: savings in input cost for power and steel by up to 5%
- Utilize national resources: Increase volume of inland waterways and coastal shipping by 50 MTPA
- IT enabled National multimodal logistics plan
- Coastal Roads through maritime states : through at least two lane Highways

Vision – World Class Ports

- Sagamala Development Company¹ to enable projects: national institution of excellence
- World class PPP program in port, waterways and connectivity projects that will attract the best domestic and international investors
- World class education/ training through IMU as center of excellence
- Maritime services clusters e.g., for ship building

These Slides Accompany the YouTube Video Tutorial:
<https://www.youtube.com/watch?v=naRUe1pXiRg>

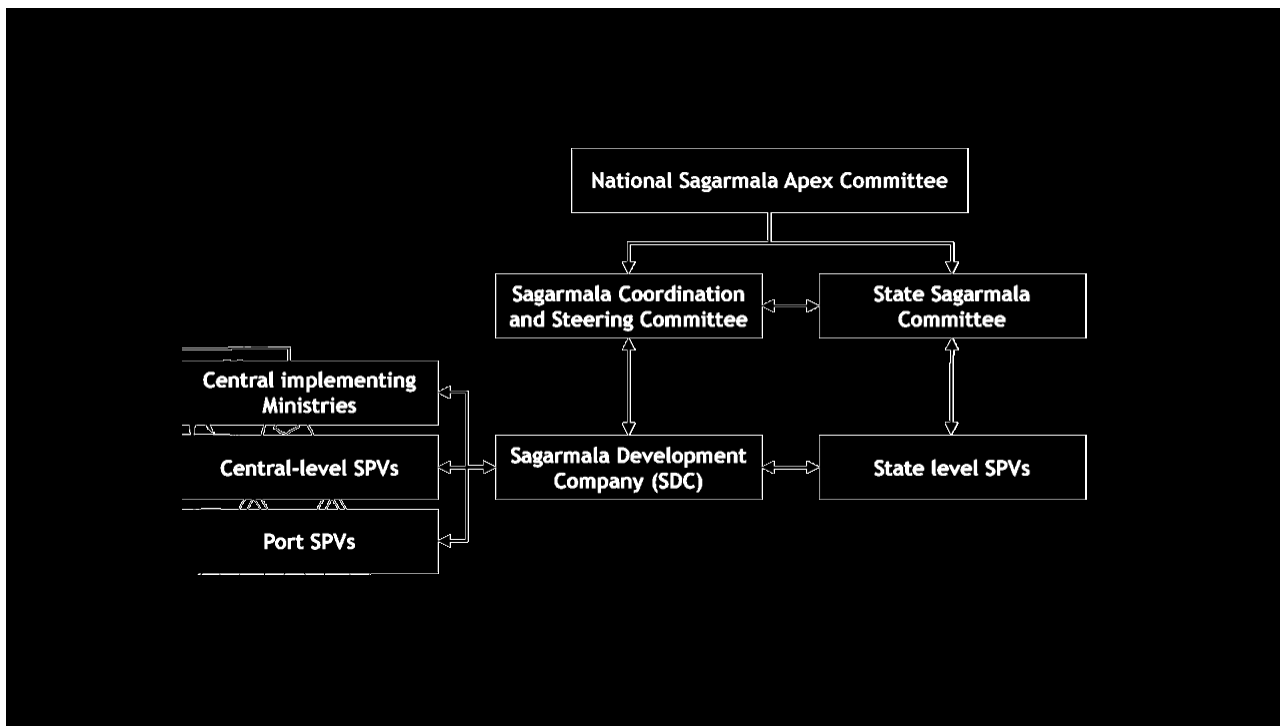
Vision – Boost Development of Ports

- 2-3 port based smart cities & marine cluster/CERS over 10,000 acres creating 50,000 direct jobs.
- 100 Early bird projects (including PPP) with Rs.100,000 crores of investment
- Additional port capacity of 1200-1500 MTPA from strengthening existing ports and 3-4 new mega ports
- World-class transshipment port of not less than 5mn TEU's capacity

Vision – Empower Coastal Community

- Skill building in coastal communities (e.g., fisheries) and creating XX million jobs in maritime states
- Comprehensive coastal community development potential from tourism in islands, light houses & cruises increasing GDP contribution of maritime states and sector

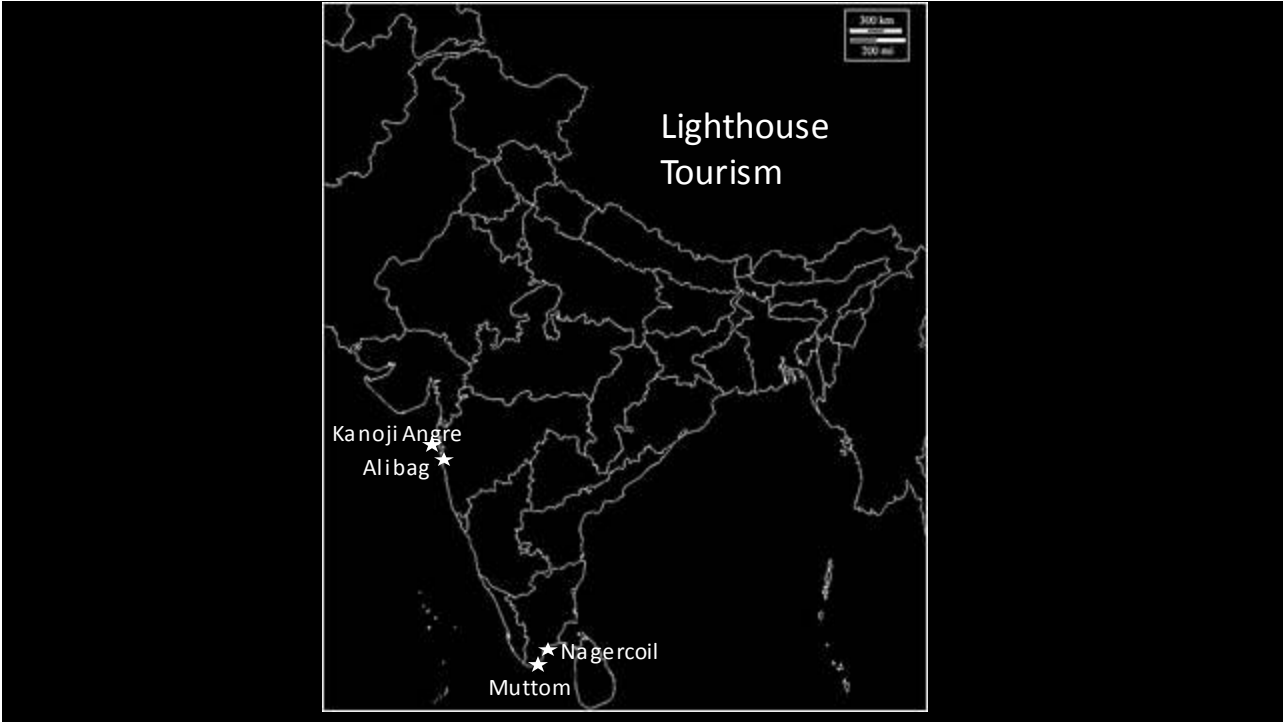
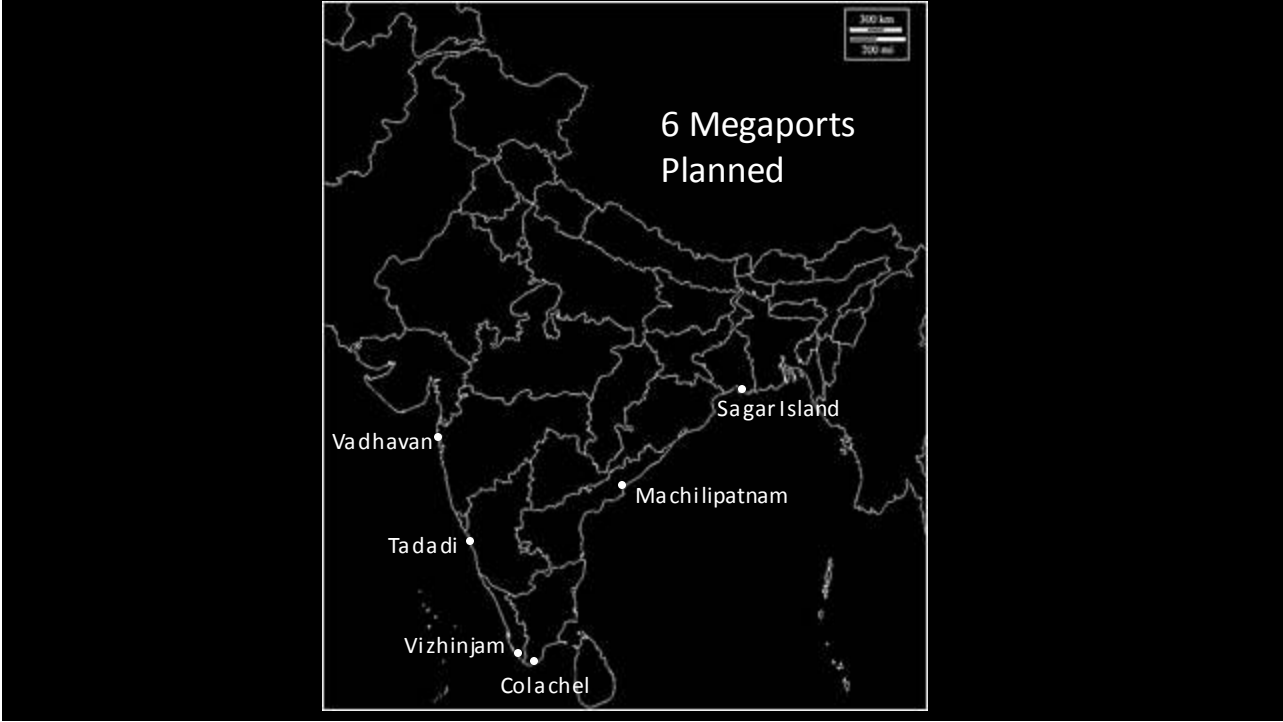
These Slides Accompany the YouTube Video Tutorial:
<https://www.youtube.com/watch?v=naRUe1pXiRg>



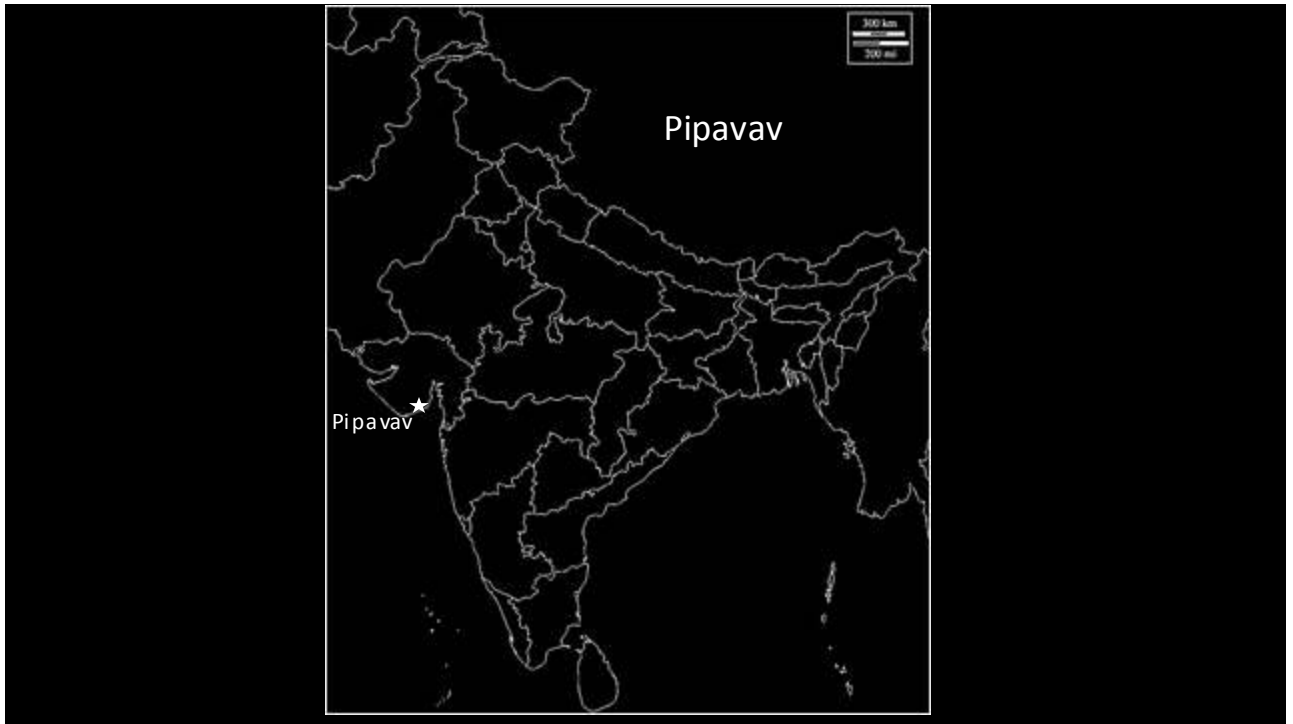
Total of 173 projects have been initially identified under four projects archetypes of Sagarmala in National Perspective Plan, April 2016. The Project archetype :

Project Archetype	Number of Projects
Port Modernisation	53
Port Connectivity	83
Port Led Industrialisation	29
Coastal Community development	8

These Slides Accompany the YouTube Video Tutorial:
<https://www.youtube.com/watch?v=naRUe1pXiRg>



These Slides Accompany the YouTube Video Tutorial:
<https://www.youtube.com/watch?v=naRUe1pXiRg>



Highlights

- Two ports Kandla (Gujarat) and Paradip (Odisha) are being developed into Green Smart Cities.
- At Navi Mumbai Special Economic Zone, government is investing Rs. 4,000 crore to provide employment to 1.5 lakh youth.
- Free trade warehousing zones will be set up in Cochin and Ennore.